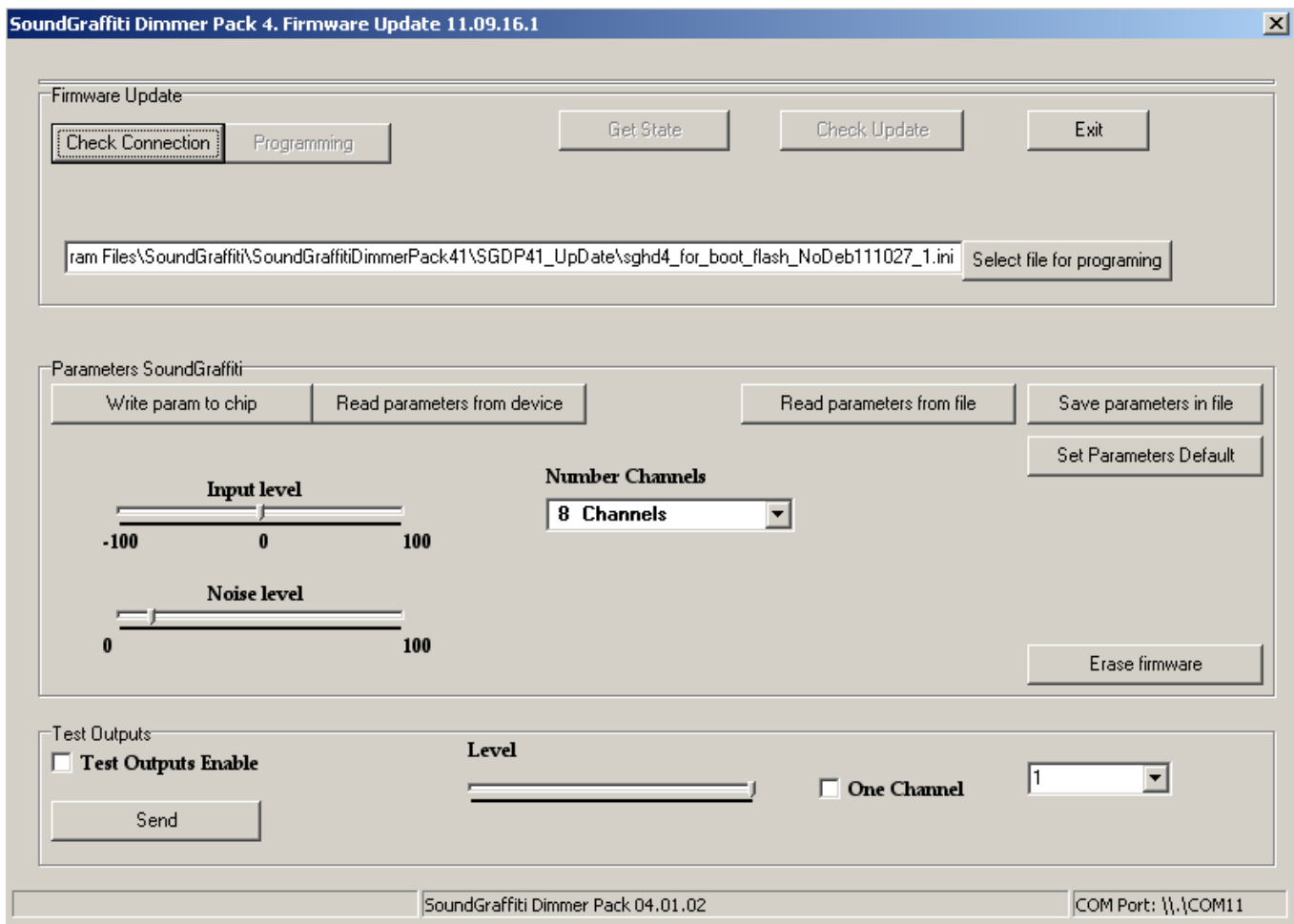


Software

SoundGraffiti Dimmer Pack 4.1 Firmware Update

User Manual

1. **SoundGraffiti Dimmer Pack 4.1 Firmware Update** - software for change parameters and upgrade firmware of SoundGraffiti Dimmer Pack 4.1 Evaluation Base Module



1. Installation:

Run "Install_SG_DP4_Firmware_Update.exe" and follow the wizard.

2. Program SoundGraffiti Dimmer Pack 4.1 Firmware Update have 3 section:

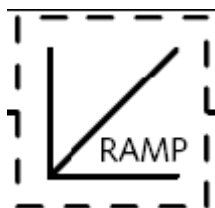
- 2.1. "Firmware Update"
- 2.2. "Parameters SoundGrffiti"
- 2.3. "Test Outputs"

3. Getting Started:

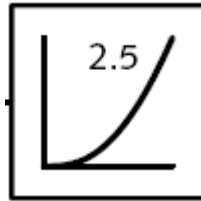
- 3.1. Connect (reconnect) SoundGraffiti Dimmer Pack 4.1 Evaluation Base Module (Base Module) to computer
- 3.2. Run program Firmware Update.
- 3.3. In section "Firmware Update" press button "Check Connection"
 - 3.3.1. If in section "Parameters SoundGrffiti" button "Write param to chip" is active - Base Module in mode for change parameters and test.
 - 3.3.2. If in section "Firmware Update" button "Programming" is active - Base Module in mode bootloader (Firmware Update).

4. Change Parameters:

- 4.1. You can change input level sound signal (gain coefficient), Noise Level (disable outputs without music signal on pause), Numbers channels. Button "Write param to chip" send parameters to base module
- 4.2. You can read parameters from chip, file and save parameters in file.
- 4.3. Button "Erase firmware" (now disabled) erase current firmware. After Erase firmware need reconnect base module and restart program. Base Module must be in mode bootloader (Firmware Update).
- 4.4. Gamma Correction - alignment gamma correction.
Gamma correction is used to correct for the nonlinear relationship between luminance and brightness.
Different for different colors and types of light sources.
If gamma correction = 1. -> No gamma correction



For LEDs gamma correction usually = 2.5.



5. Test:

- 5.1. For test outputs click on Check Box "Test Outputs Enable". Button "Send" send test data to base module.

6. Firmware Update

(Do not try to update firmware standard method, the update file is encrypted)

- 6.1. Select file for update (button Select file for programming)
- 6.2. Press button "Programming"
- 6.3. After programming need reconnect base module and restart program.
Base Module must be in mode for change parameters.