

Setting Sound Input from hard disk of computer for Vista

Vista

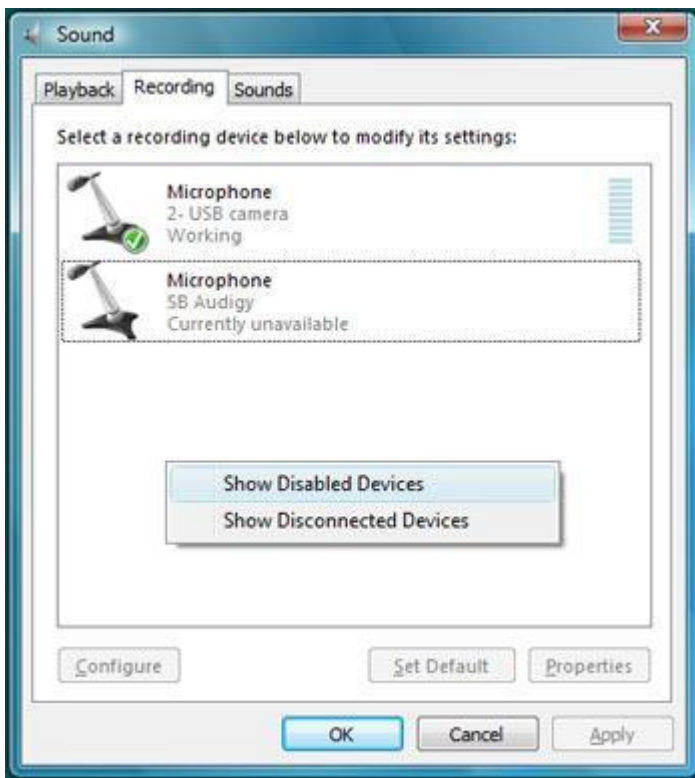
Step 1. Right click on the speaker icon by the clock in the lower right, and select Recording Devices



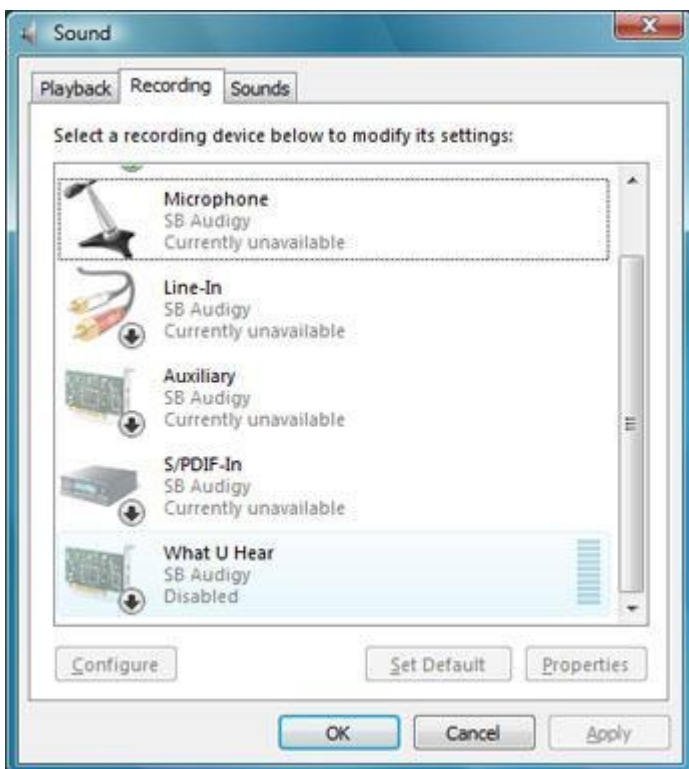
Step 2. Your screen will likely look something like this. Notice only two items here.



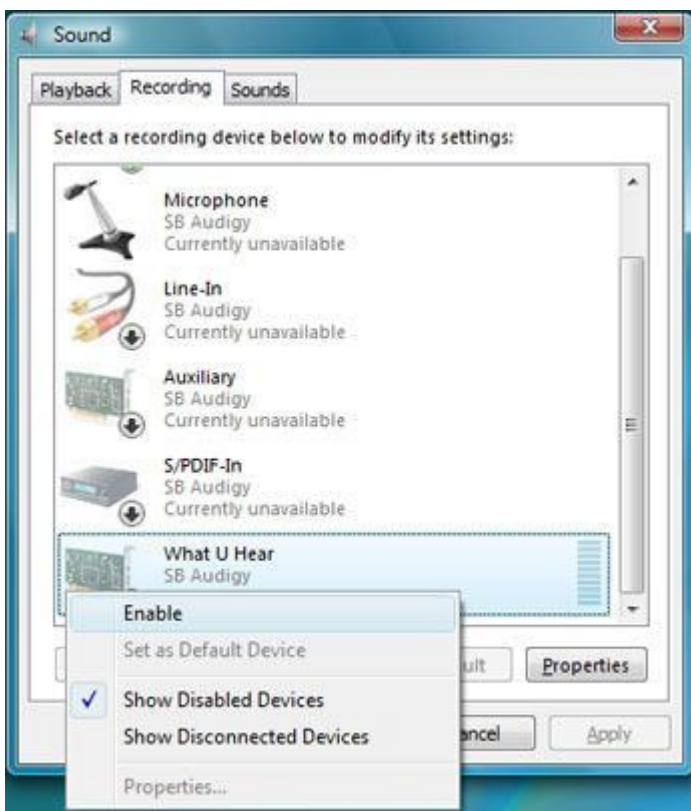
Step 3. Right click in the 'blank area' and select Show Disabled Devices .



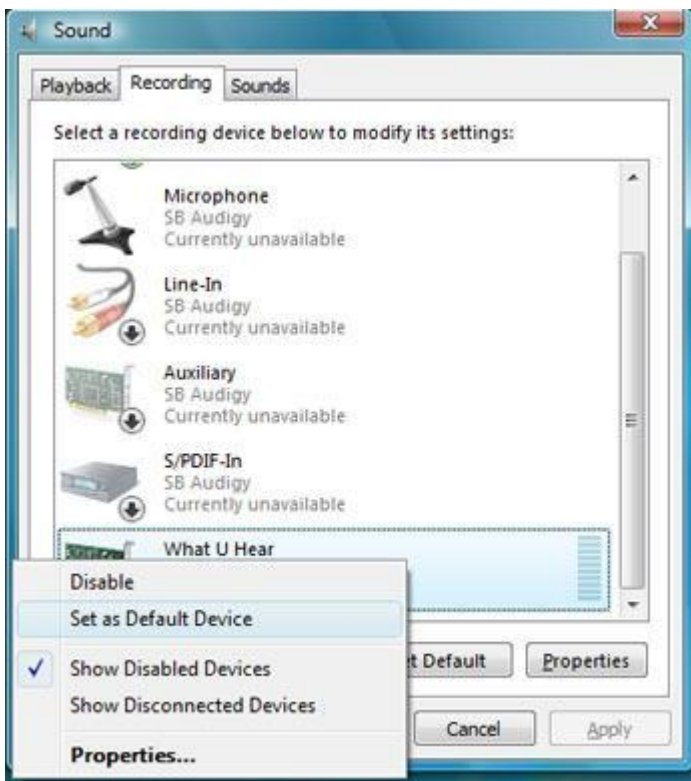
Step 4. Now you may have a lot more items in the list. Find one called What U Hear or Stereo Mix .



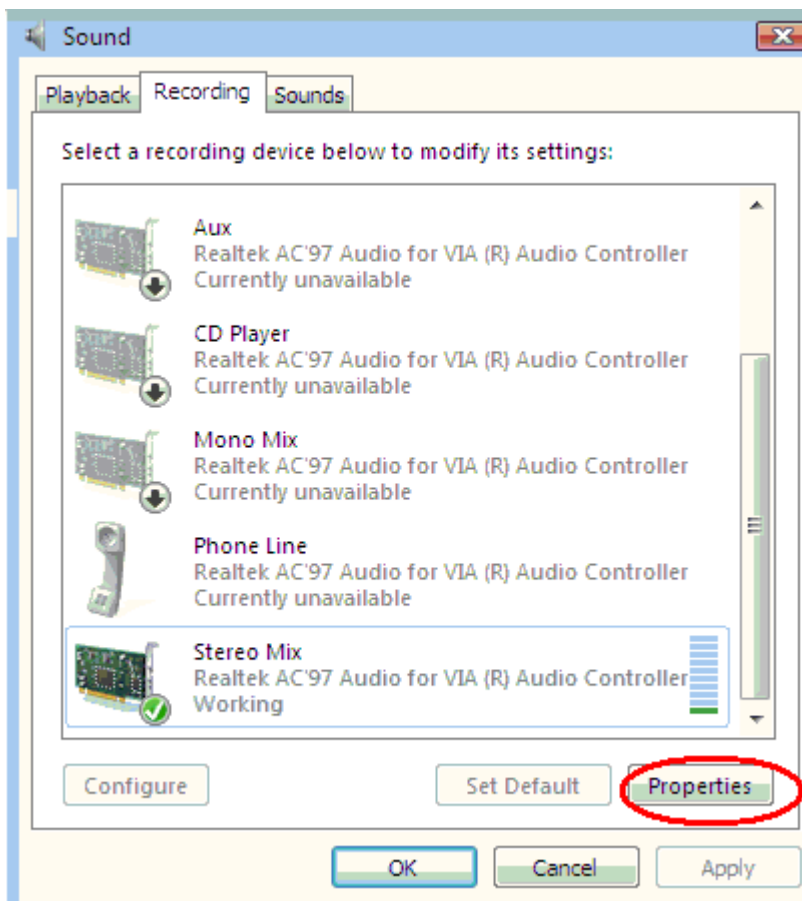
Step 5. Right click on the one you found, and select Enable .



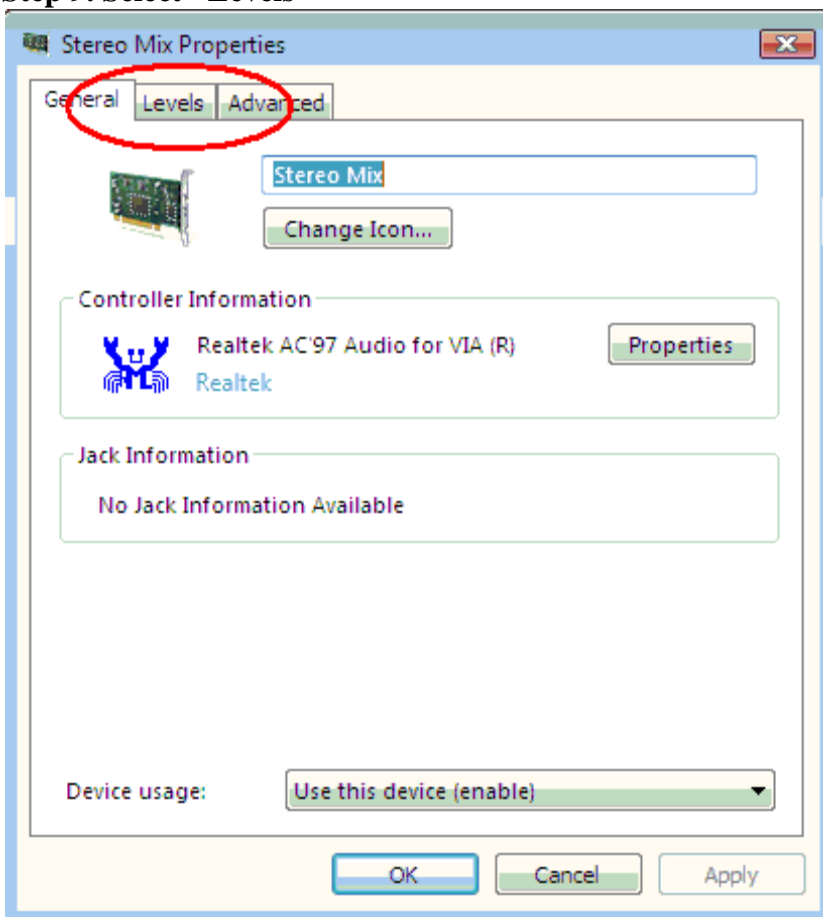
Step 7. Next, right click on it again and select Set as Default Device .



Step 8. Select "Properties"



Step 9. Select "Levels"



Step 9. Set Level and Done!

